

# THE DREAM PAVILION

Dreams are a reflection of another **time**. We look back to **memory** or forward to possibilities and imagine life to be other than the current moment. Contemplation of **nature** is often a conduit to dreaming.

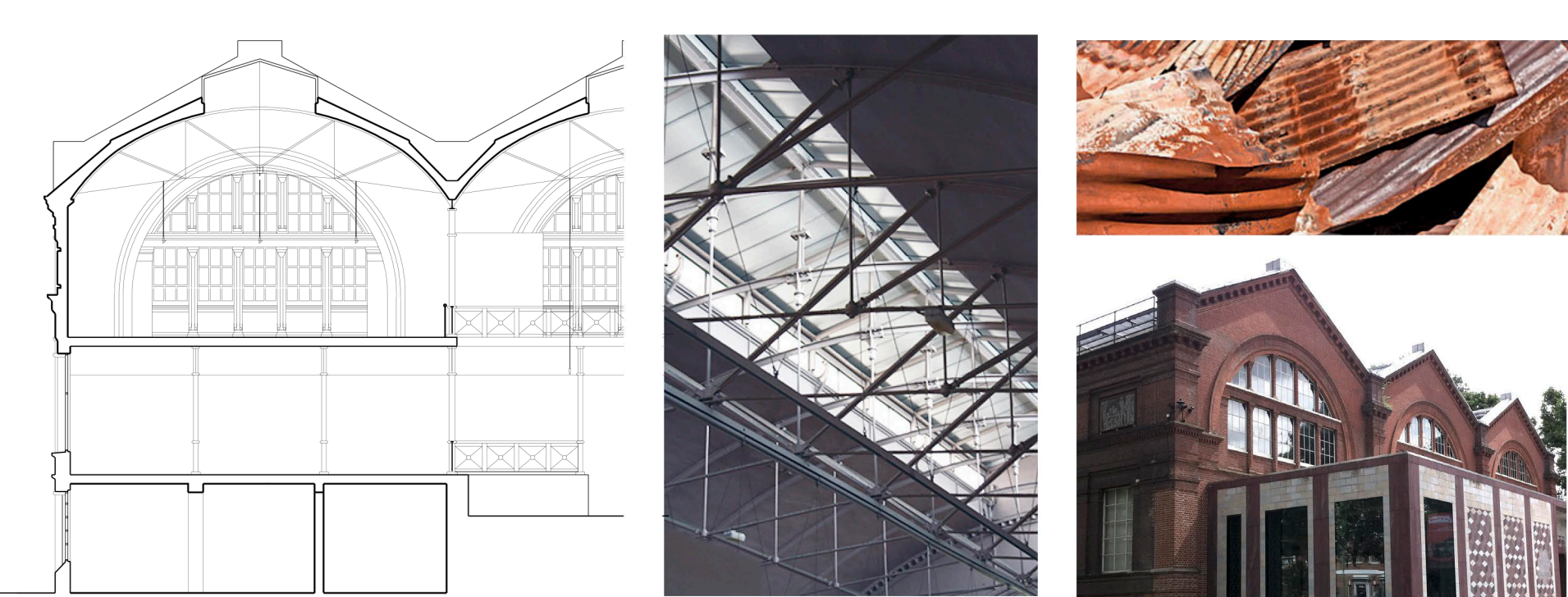


## A local history of dreaming

The Victorians dreamt of social change through education, and created museums.

Bethnal Green dreamt of a new life for the Brompton Boilers, and re clothed the iron skeleton in brick, shedding the rusty metal skin.

The Museum re-imagined itself as a place for adults and children to dream of the past and future, and it became dedicated to childhood.



## Material, memory, nature

The pavilion reflects the dreams embedded in the Museum's history and knits together the natural elements of the site to form a place for new dreams.

The humble, discarded iron cladding of the Brompton Boilers is fondly remembered in the six folded Corten petals that unfurl towards the Gardens.

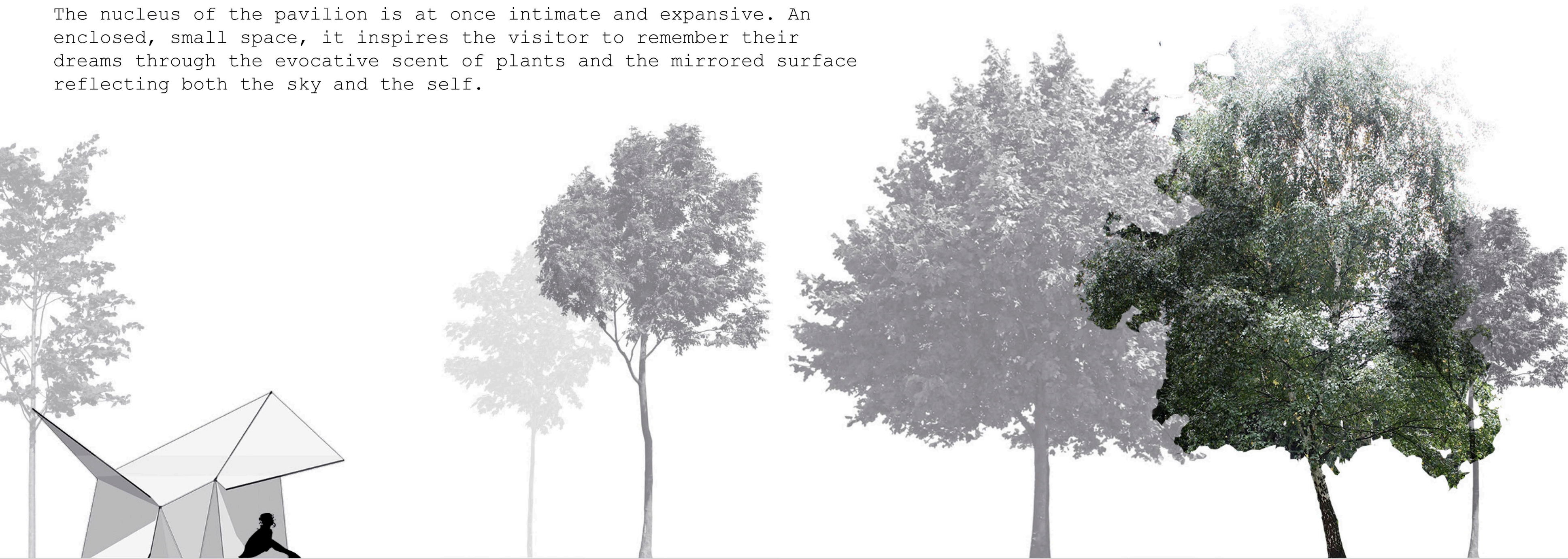
Each petal is focused outwardly on a particular tree. In turn, the leaves on the trees are echoed in the perforations on the pavilion roof and the light dancing on the inside of the panels.



## Scale and growth

The scale of the pavilion changes, as experience of the world is altered from childhood to adulthood. The grown ups must stoop to enter the pavilion's centre through the child-scaled opening; only children can sit on the pebbles in the small triangular niches whilst adults reach up to try and touch the roof of the tall niches.

The nucleus of the pavilion is at once intimate and expansive. An enclosed, small space, it inspires the visitor to remember their dreams through the evocative scent of plants and the mirrored surface reflecting both the sky and the self.



## Assembly

The simple repetitive form of the pavilion is created from six rectangular pieces of Corten steel which are cut, flipped, hinged and folded to be delivered to site as a flat-pack. Once unfolded the arch-like petals can be secured into the slotted timber base.

The Pavilion is low waste, easily transportable and demountable. At the end of its inhabitation of the Museum Gardens, it can be easily dismantled and even go on to have a new life elsewhere...

