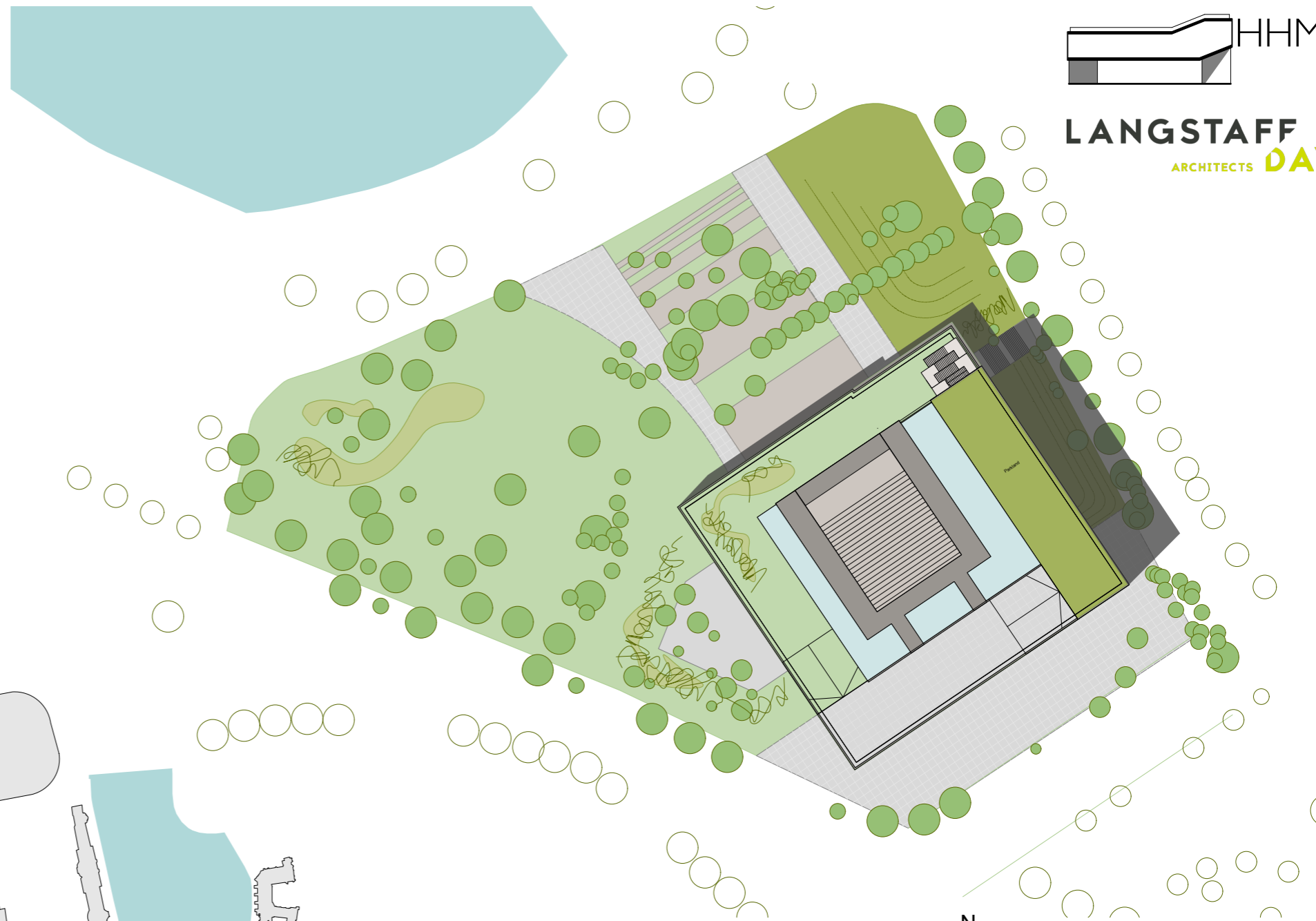
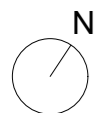
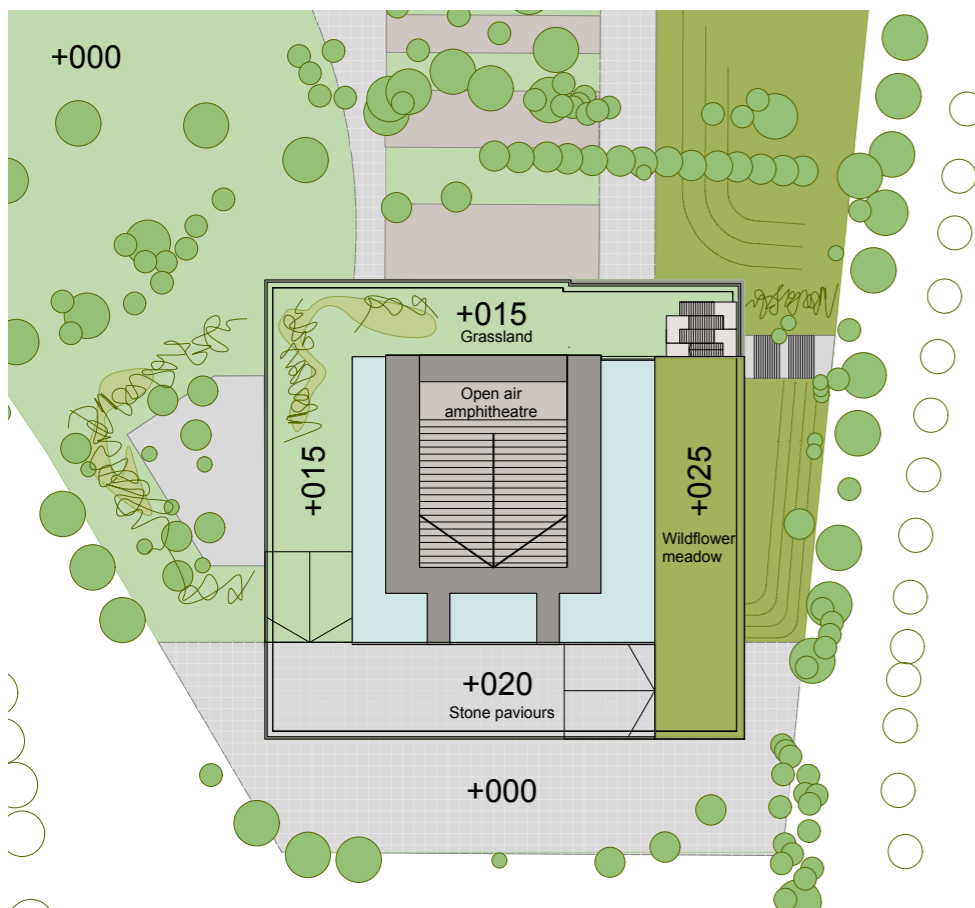
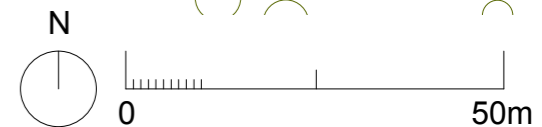


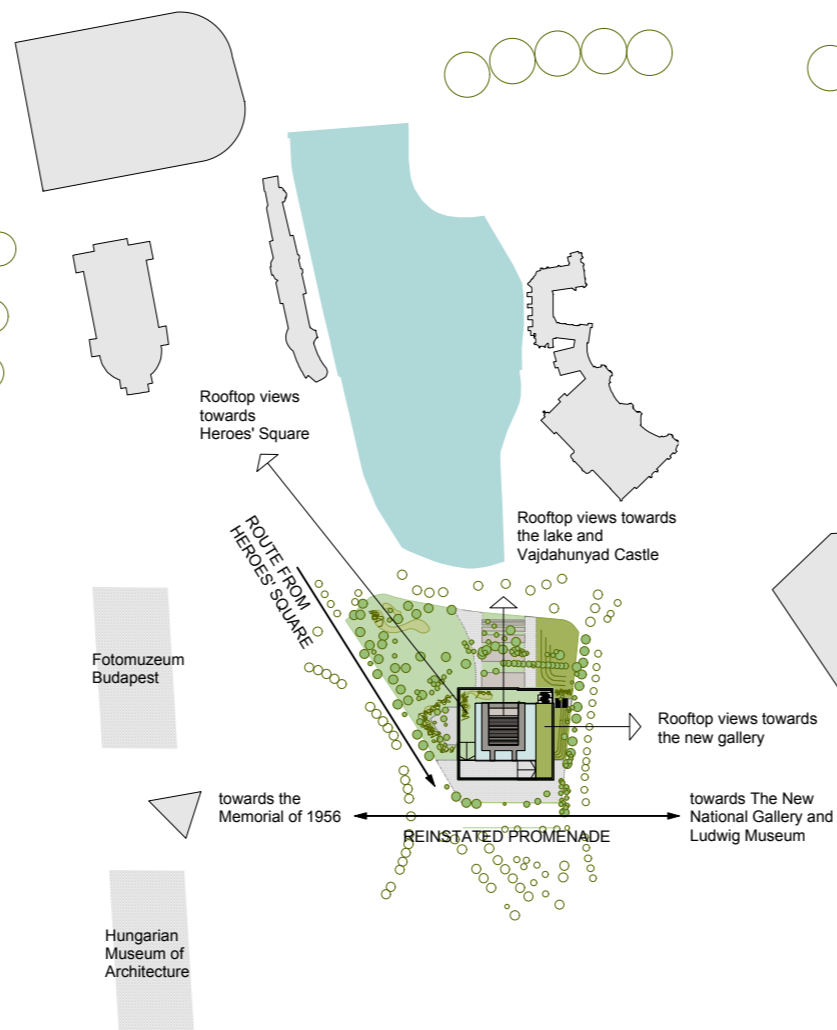
ENTRANCES [GROUND PLAN]



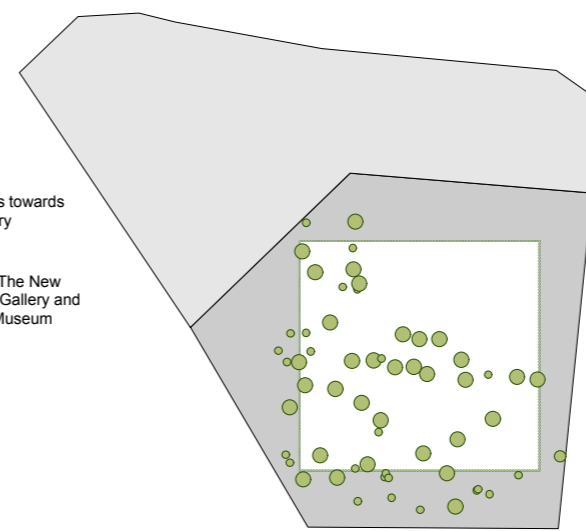
SITE PLAN 1:500



THE PARK SPIRAL [ROOF PLAN]

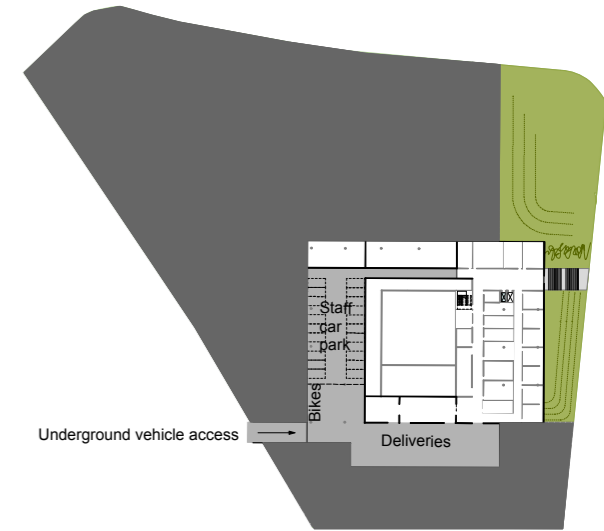


RELATIONSHIP TO THE CITY PARK



FOOTPRINT MINIMISING TREE LOSS

Value of cut down trees : 17 994 798 HUF



VEHICLE ACCESS AND PARKING